

Spotlight

May 2022

Selecting a tree?

Know its mature height before deciding where to plant

If you are considering planting a tree, carefully select its location before you begin digging. Also, call 8-1-1 before you break ground to get underground utilities marked. If trees are planted in the wrong location, they can be expensive to maintain and even dangerous. Dunn Energy Cooperative and Safe Electricity offer tips on how to pick an optimal location.

A mature height of fewer than 15 feet is recommended if planting near lines. Some trees that are generally not tall enough to interfere with lines include crabapple, honeysuckle, juniper, flowering dogwood and hawthorn.

Trees should never be planted directly under power lines, near poles or too close to electrical equipment.

Once you have a tree selected, call 8-1-1 before putting a shovel to the ground. The "Call Before You Dig"

number is a free service that locates and marks public underground utilities in your yard or on your land. Call several business days before you plan to dig. Locators will mark public underground utilities such as electric, gas, water, cable and fiber. The service does not mark privately owned lines or pipes.

Tree tips continued on back.



FROM THE BOARD ROOM

March 2022 Board Meeting Highlights



Monthly Reports:

Operations reported that crews have been working on a good amount of line maintenance and pole change outs. The metering department is working on testing meters, meter service work, and ordering materials

for pole replacements. The line crew also attended the Diggers Hotline annual safety meeting virtually.

The IT & Administration update talked to the Office 635 email migration, as well as the new security software installation. An update on the front office remodel was also given. The remodel is on track to be completed on time.

Financially, February temperatures were just below average and as a result kilowatt hour sales exceeded budget by 4%. Year to date, operating revenue is 7.2% above budget, expenses are 6.3% above budget resulting in margins slightly above budget so far this year. The Cooperative auditing firm has completed the annual financial audit and reported their findings of a clean audit to the Board of Directors.

The CEO/General Manager gave an overview on day-to-day operations that included a recap of the NRECA Annual Meeting and the Rotary Feeds event held

last month. Cooperative employees packaged over 10,000 meals the day of the event. He also provided information on the Cooperative's Annual Meeting, which is scheduled for Thursday, May 19 at the office of the Cooperative.

The following items were approved:

- Minutes of the February 2022 Board meeting
- Capital credit estate payout for deceased members.
- Audit committee report of all checks, ACH payments, wire transfers, credit card statements, and investments accounts.
- The 2021 Audit
- 2021 Form 7
- Nuclear settlement refund

Other Business:

Director Zwiefelhofer reported on Dairyland Power activities for the month.

Reviewed the monthly report of new Cooperative members.

Reviewed the monthly governance video that discussed Finding the Right Level of Transparency

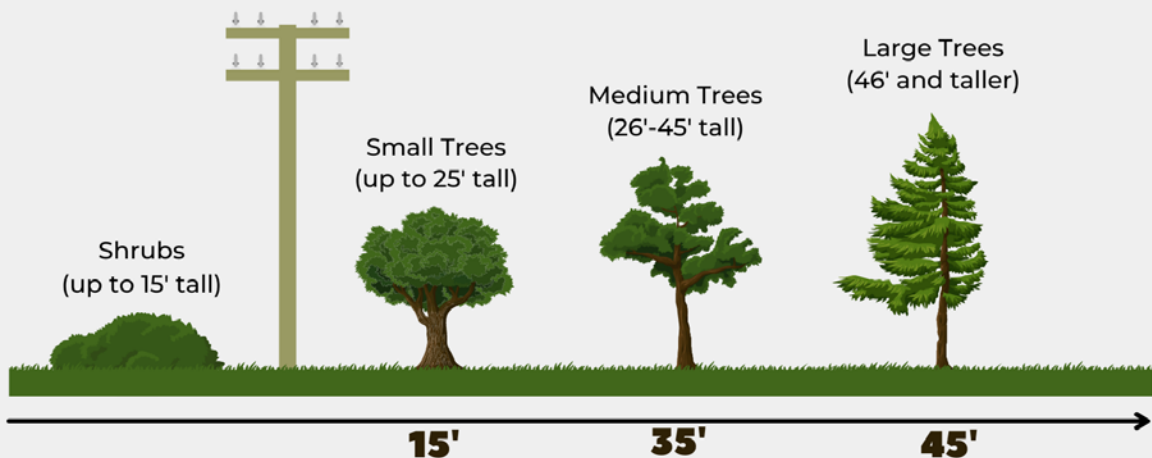
Upcoming meetings for the board to attend

Other tree tips:

- If your established trees are growing into power lines, contact us to ask about them. In some cases (depending on the tree's location), we will come out and trim the tree. If it is your responsibility, do not take on the task yourself. Only tree trimmers who are line-clearance certified are legally allowed to prune and trim trees within 10 feet of power lines.
- It is important to have trees trimmed. Limbs can fall on power lines during bad weather, resulting in power outages or blinking lights. Broken or drooping limbs could also cause a fire.
- Tall-growing trees with a mature height greater than 45 feet should be planted at least 45 feet away from lines to avoid future pruning. Some of these trees include oak, white and blue spruce, most pines and most maples.
- Be sure no one climbs a tree near power lines. If branches are touching the wires, the tree could be energized. Even branches that do not touch power lines could become energized if a child's weight is added. In addition, a child could climb high into the tree and be able to reach the line.
- For more information about electrical safety, visit SafeElectricity.org.

Plant the **RIGHT TREE** in the **RIGHT PLACE**

The larger the tree, the farther it should be from a power line. Avoid planting beneath power lines, near poles or close to electrical equipment.



Remember, know what's below by calling 8-1-1 before you dig.

Learn more at: SafeElectricity.org



DON'T FORGET!

The Cooperative Annual Meeting is being held on May 19.
Find more information at dunnenergy.com!



This newsletter is published for the members of Dunn Energy Cooperative. If you have questions or comments please give us a call. Visit the Energy Professionals at your local energy cooperative.



N5725 600th Street/ P.O. Box 220
Menomonie, WI 54751-0220
Phone: (715) 232-6240 or 1-800-924-0630
Web site: www.dunnenergy.com
This institution is an equal opportunity provider and employer.